

# SafeDial™

config 01010



## REMOTE UPLOAD/DOWNLOAD INSTALLATION AND USER MANUAL



SafeDial™  
wireless  
GL45-3G



Powered by PERMACONN™

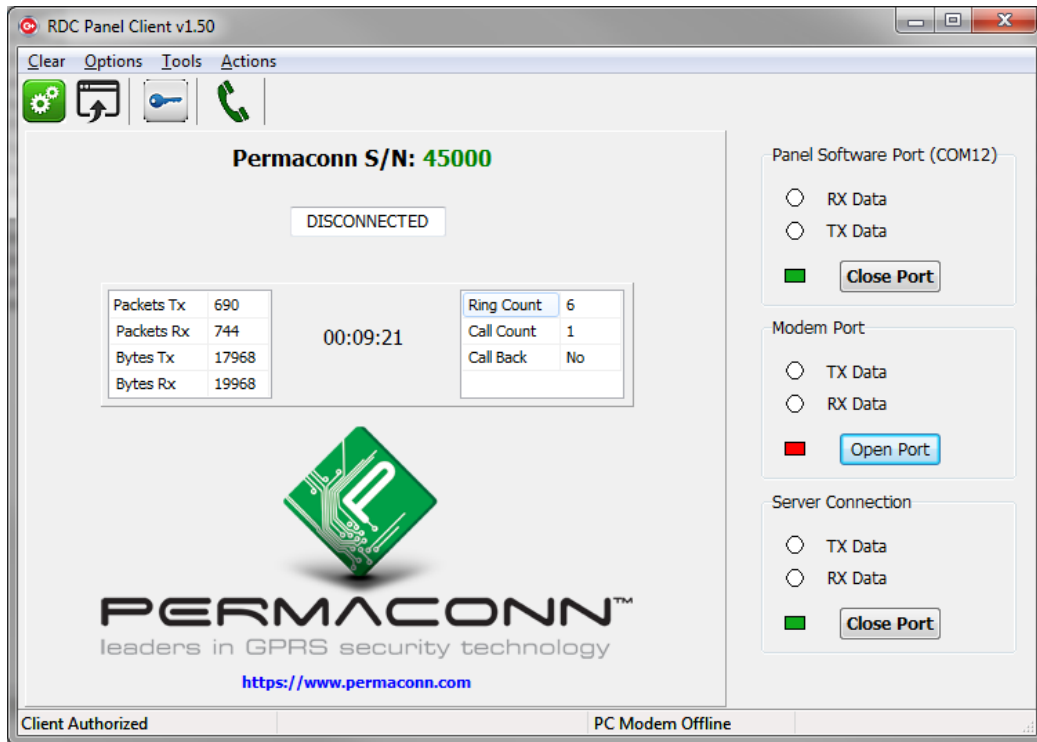
Globe Wireless  
Level 8 - 499 St Kilda Road Melbourne VIC 3004  
[www.globetelecom.com.au](http://www.globetelecom.com.au)

Technical Support : 1300 728 650

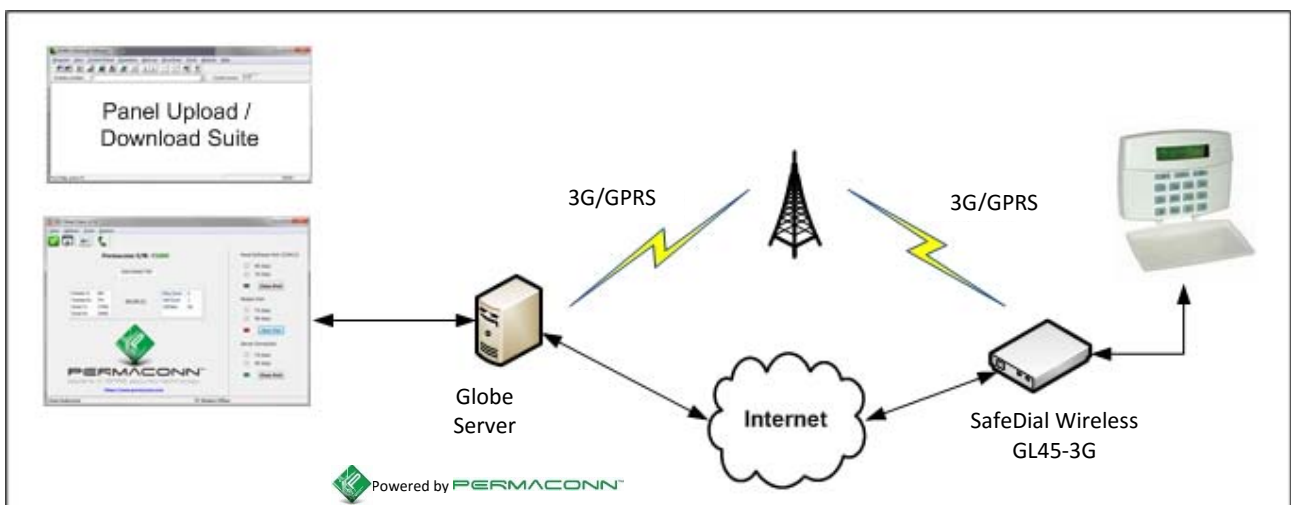
GLOBE  
WIRELESS

# Introduction – Safedial Config

The Globe SafeDial Config application allows the user to remotely connect to a supported alarm panel utilising the Globe network and the Alarm Panel's Up/Download software suite. This solution therefore eliminates the need for a phone line to remotely connect and configure Alarm Panels.



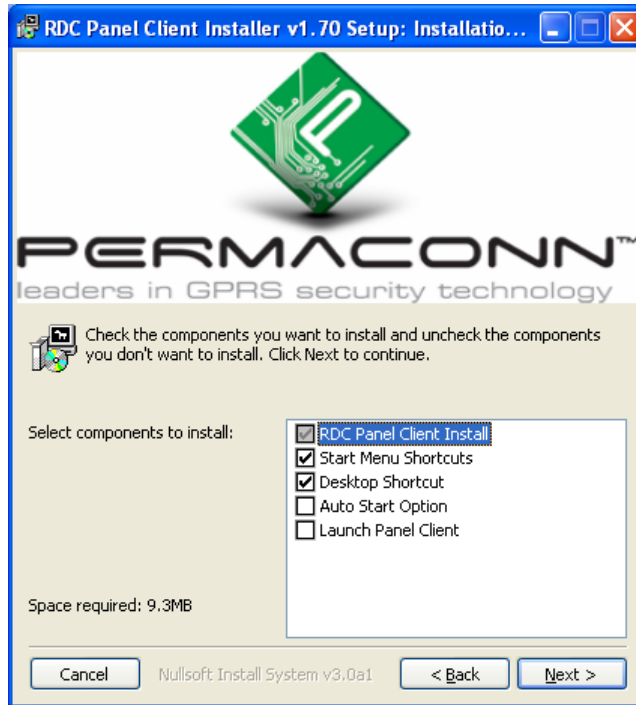
As shown in the diagram below, a Globe Wireless user can remotely download to a supported alarm panel via 3G or IP. To enable this functionality the user must have a suitable subscription active and an internet connection. The target alarm panel must be connected to a GL45-3G.



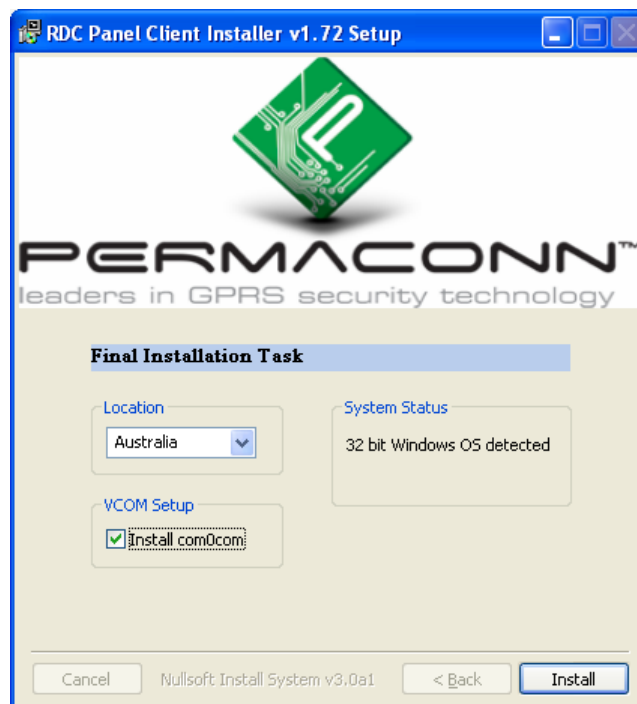
The Panel Client Software (PCS) can be downloaded from Permaconn's website (<https://www.permaconn.com/uds.php>).

Simply enter your SafeDial Toolbox (Atlas) login credentials at the bottom of the page to download the latest version of the software.

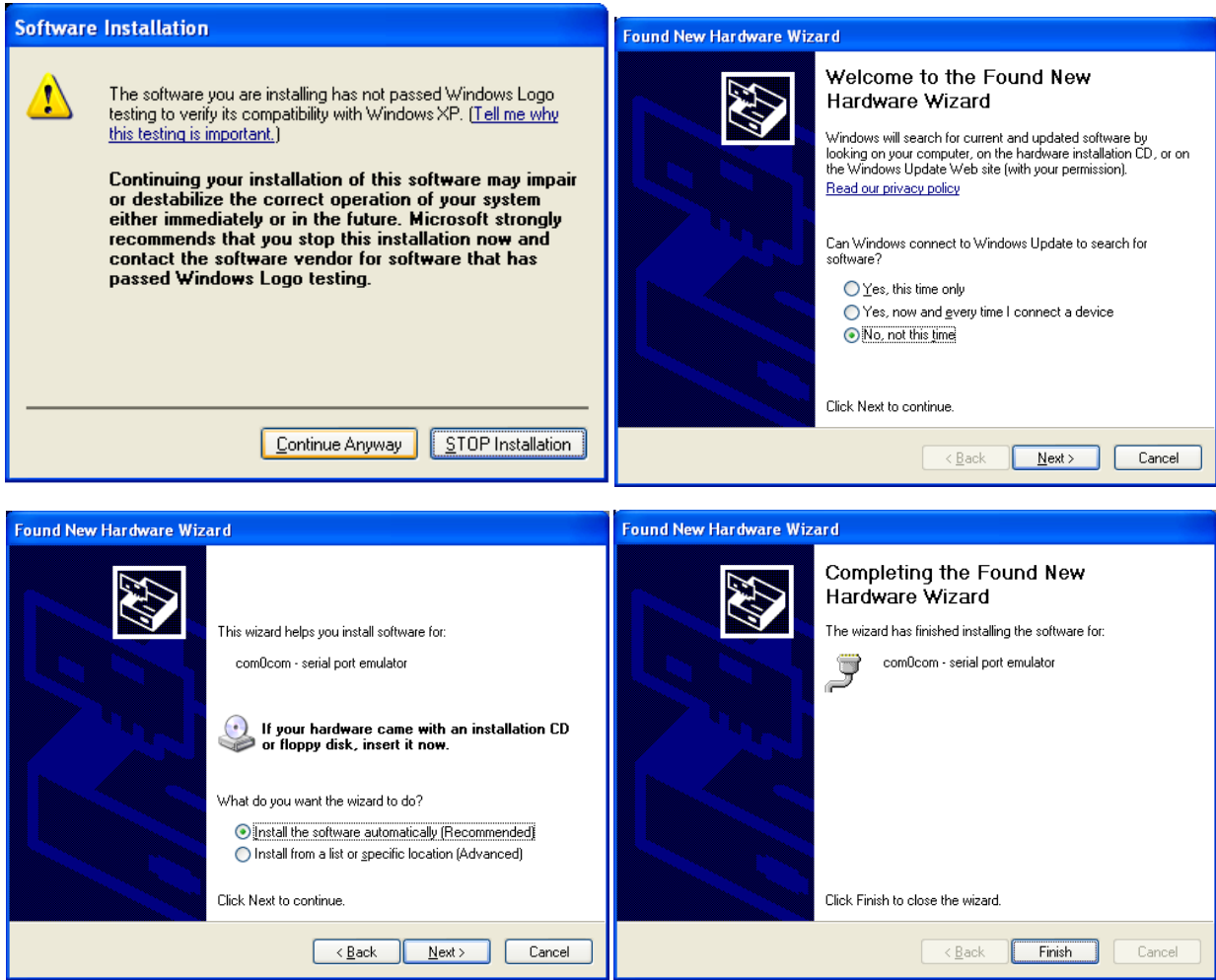
Run the supplied installer and select any desired options as shown below:



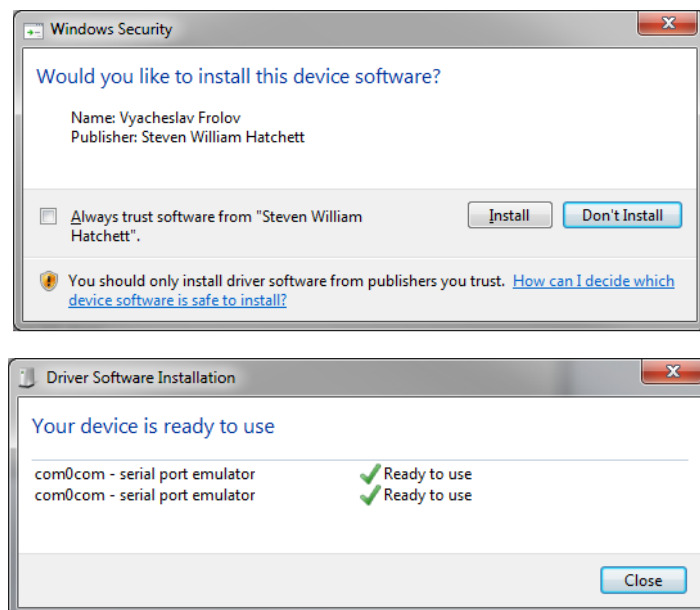
To allow the Alarm Panel Software to connect to SafeDial Config, a virtual COM port pair is required. This can be done automatically for you by checking the Install com0com check box:



### Windows 32bit Installation:

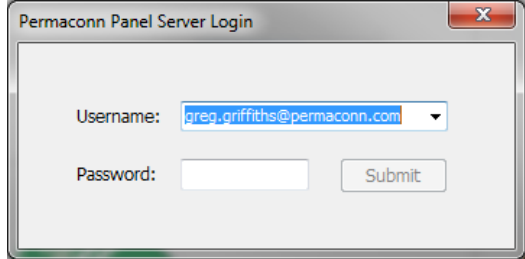


### Windows 64bit Installation:



# Configuration

Once the program is executed, you should be presented with a log in dialog, use your SafeDial Toolbox credentials to login:



Open the settings pane by clicking: Options > Show Setup



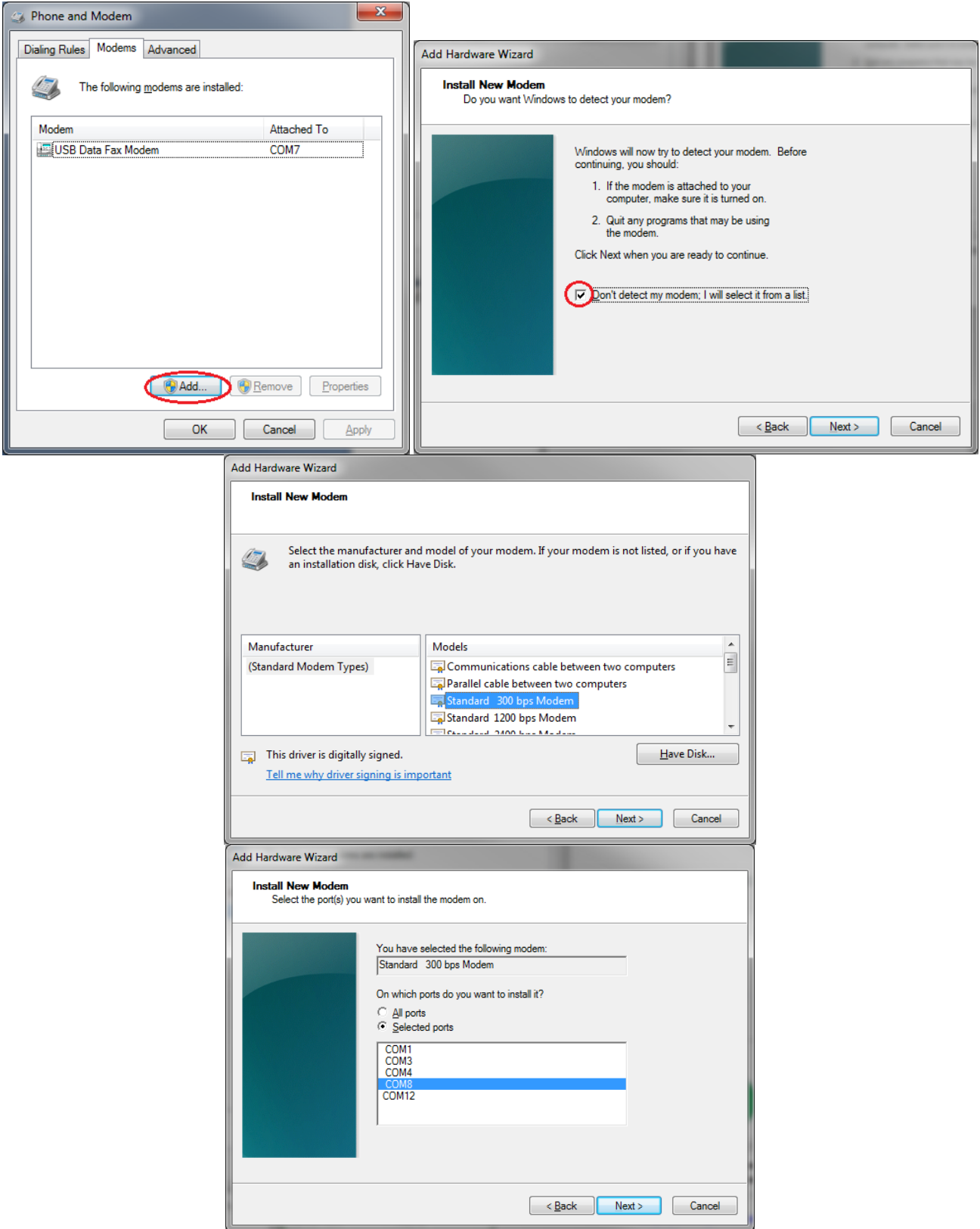
Note: If the ports are open (green border) you may not edit them.

Panel SW Interface	
Property	Value
Control Port No	COM12
Control Baudrate	300
Control Port Parity	None
VCOM Port Pairs	
Property	Value
VCOM Pair 1	COM8 :: COM12
Modem Interface	
Property	Value
Modem Port No	COM2
Modem Baudrate	300
Modem Port Parity	None
Permaconn Server [AU]	
Property	Value
Server IP	203.45.70.112
Server Port	55540

- This port should be configured to connect to the non-modem virtual port of the pair created by the installer. This port defaults to the higher port of the pair created.
- Virtual com0com COM ports detected on the host system.
- This interface can connect to a physical modem and allows commands to be transferred directly to a modem instead of using the permaconn network.
- The Globe server settings should be correct based on the country selection during the installation.

# Modem Setup

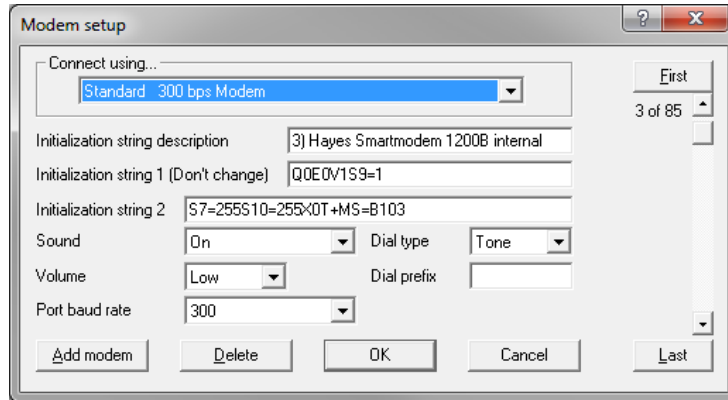
Certain Alarm Panel software suites only recognise installed modems and do not allow selecting a COM port. To circumvent this issue you need to install a modem on one of the virtual COM ports that you added in the section above. Open the "Phone and Modem" panel by typing "telephon.cpl" in the Windows Run box:



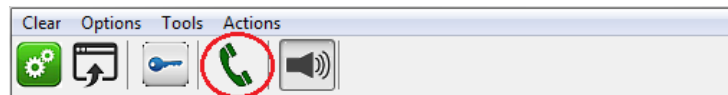
## Usage Example

This example will focus on configuring the United Technologies Corporation's DL900 download software to connect to a Networx NX-16 Panel.

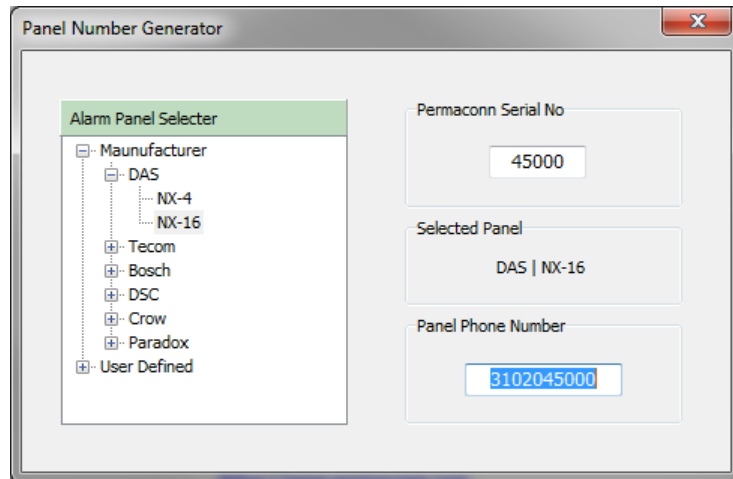
Select the newly installed modem:



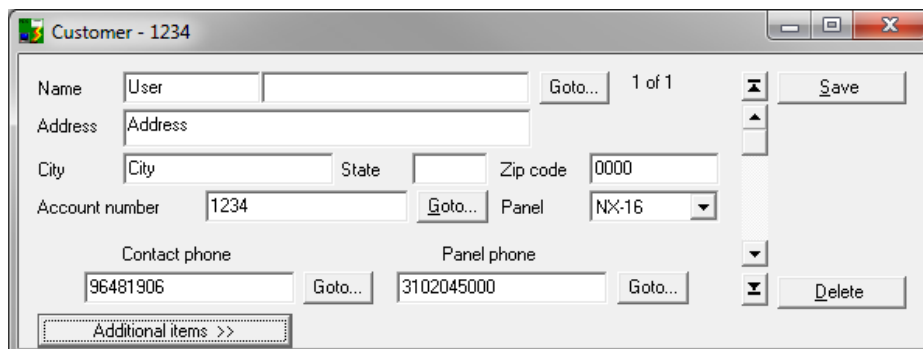
Generate the Globe phone number by clicking the phone icon:



Enter the GL45-3G serial number and select the Alarm Panel:

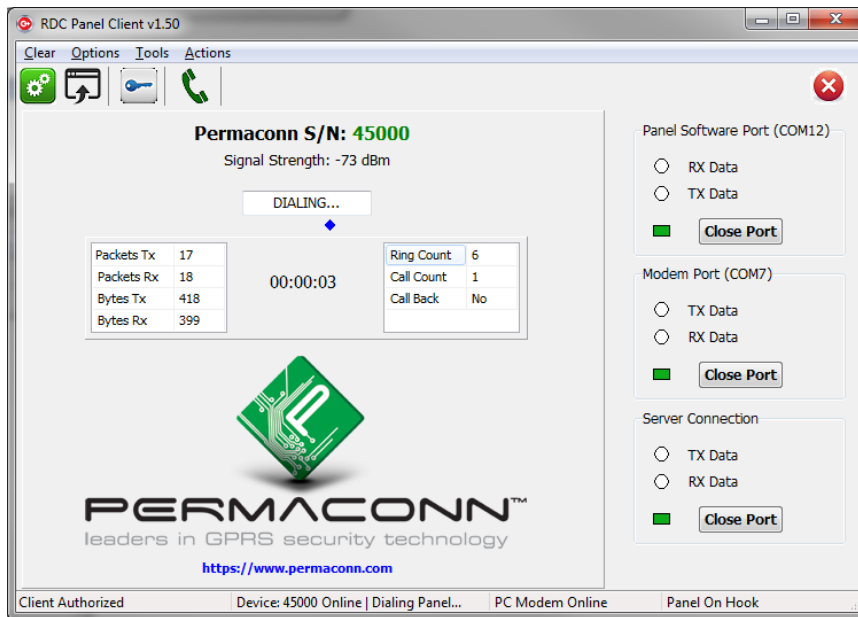


Open up the designed customer account and replace the Alarm Panel phone number with the generated one:

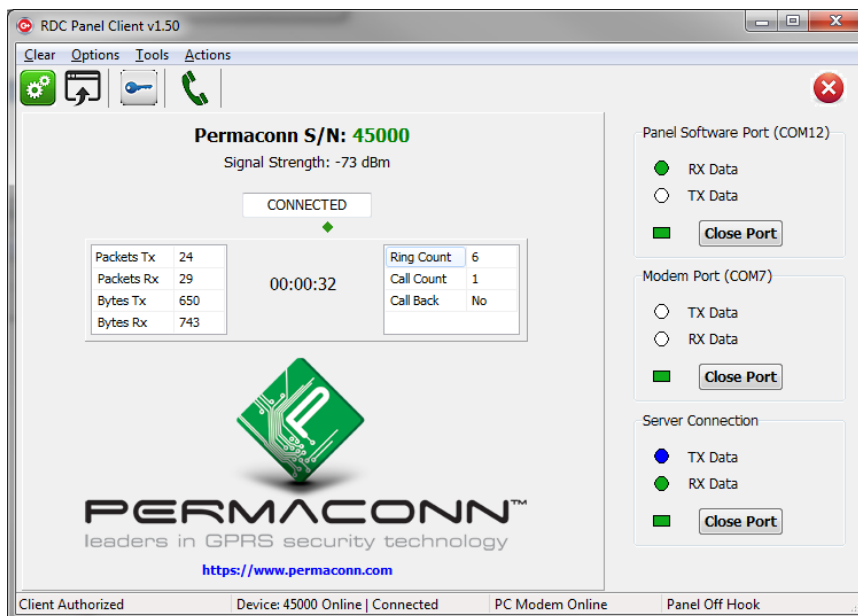


In the DL900 software click Download > Connect < Connect using modem

If the Globe device is online, the Signal Strength will be shown and the Alarm Panel is dialled:



Once the Alarm Panel answers the application indicated the connection status:



At this stage the user may make the required changes to the Alarm Panel and then disconnect from the DL900 software. The disconnect button on SafeDial Config should only be used as a last resort to close the connection as the host Alarm Panel software will generally initiate a disconnection.



## Liability

Subject to the Standard Terms and Conditions as set out in your agreement

ANY LIABILITY FOR CONSEQUENTIAL AND INCIDENTAL DAMAGES IS EXPRESSLY DISCLAIMED. RADIO DATA COMMS, PERMACONN, GLOBE TELECOM AND GLOBE WIRELESS IN ALL EVENTS IS LIMITED TO, AND SHALL NOT EXCEED, THE PURCHASE PRICE PAID.

While every effort has been taken to ensure the accuracy of this document, Globe Telecom assumes no responsibility or liability for any errors or omissions. Globe Telecom reserves the right to make changes to this manual due to ongoing development.

## Technical Support

For SafeDial Config support, please contact Technical Support on 1300 728 650