

## Texecom Premier 24 Alarm Panel

- ✓ **Panel Dialler wiring**
- ✓ **Panel Dialler programming**



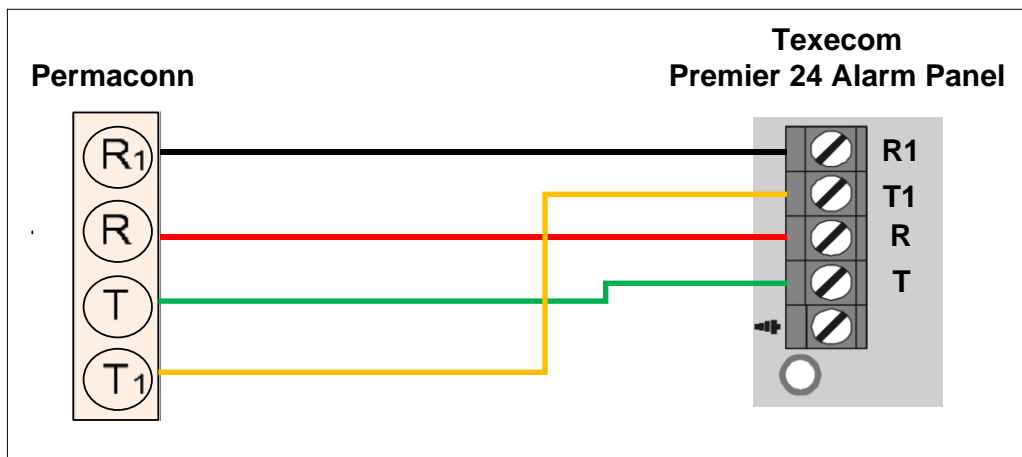
### **Background:**

Permaconn communicators have a terminal block for the connection of the female 611 fly lead (supplied). If the Alarm Panel also has a terminal block for PSTN connection, we recommend you use your own cable between the Alarm Panel dialler and the Permaconn communicator. This type of installation negates the use of the female 611 fly lead, decreasing your installation time. For four (4), six (6) and eight (8) pin RJ connectors, please refer to manufactures wiring diagram.

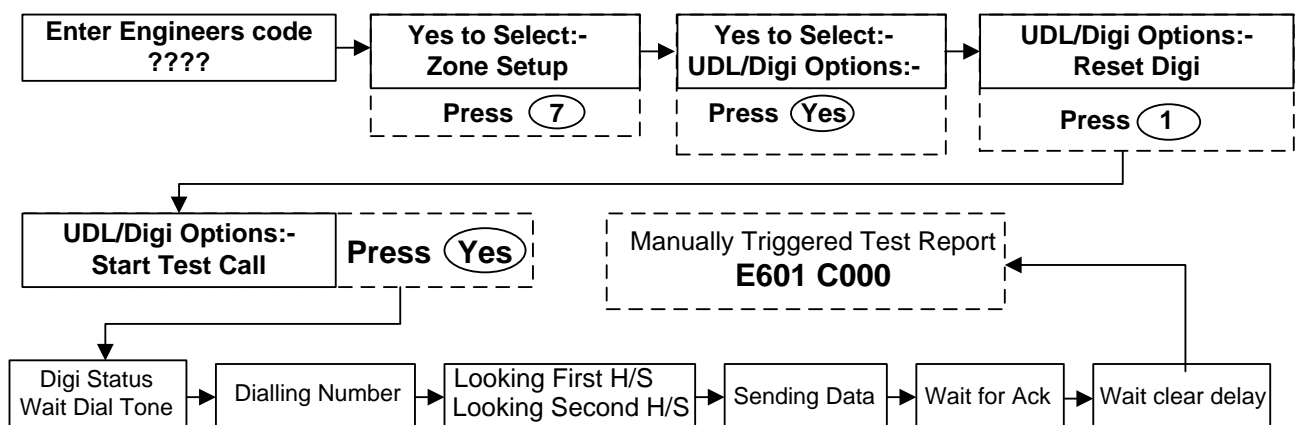
There are five (5) minimum requirements from the Alarm panel for successful communication:

- 1) Must have an eight (8) digit primary phone. E.g. 12345678.
- 2) A four (4) digit account number.
- 3) Must be Contact ID format.
- 4) Must be set for tone (DTMF) dialling.
- 5) Open / Close reporting, must be enabled for Pocket Secure App.

## Texecom Premier 24 Alarm Panel



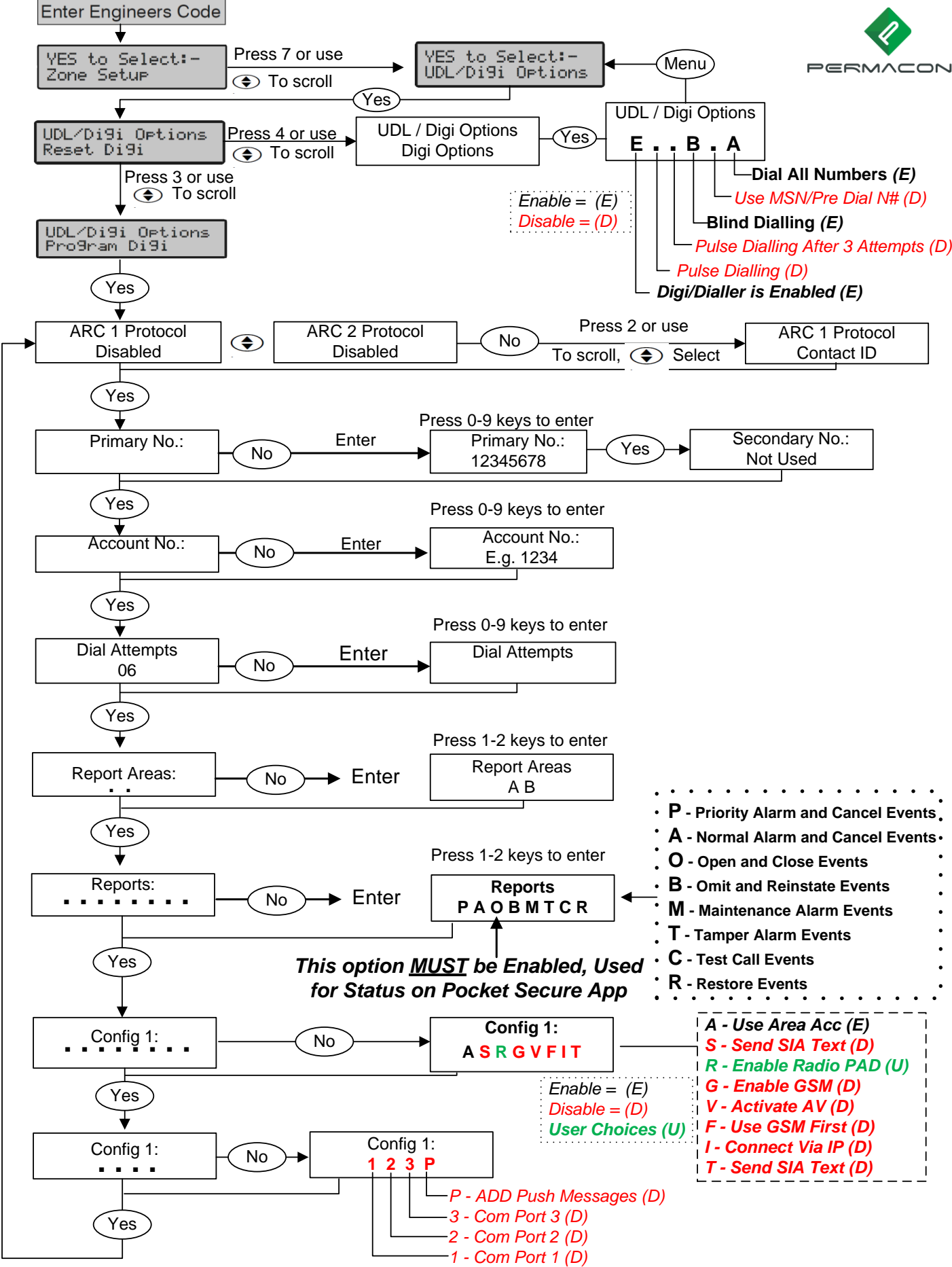
Send Test Call



Open (Disarm) Report is sent with a CID **E409 C00?** Keyswitch / Close (Arm) Report is sent with a CID **R409 C00?** Keyswitch

**NB: This is required For Pocket Secure App**

Dialler Programming Setup for Texecom Premier 24



Exit Programming: Press Menu + Reset